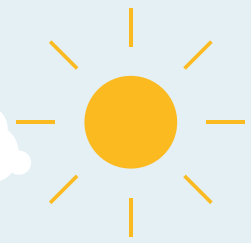


SUMMER 2023 RATES & DATES

LOVE LIFE. LOVE COLLEGE. LOVE LIVING ON CAMPUS.

Summer housing is open to all students enrolled in a minimum of 1 credit hour in either summer semester session. Prices below are listed per person. If the summer semester is your first time living on-campus, a \$130 application fee may apply.



SHORELINE RIDGE

Open to newly admitted and current students

	2-Bedroom Apartment	3-Bedroom Apartment	4-Bedroom Apartment
Session 1 May 12 - June 21	\$1427	\$1337	\$1248
Session 2 June 23 - August 5	\$1707	\$1596	\$1492
Total	\$3134	\$2933	\$2740

LASSONDE STUDIOS

Open to newly admitted and current students.

3-Person Loft	4-Person Loft	Interior Pod	Exterior Pod	Single	Double
\$1754	\$1654	\$1654	\$1754	\$1530	\$1330
\$2051	\$1934	\$1934	\$2051	\$1789	\$1556
\$3805	\$3588	\$3588	\$3805	\$3319	\$2886

U OF U ON THE DRAW

Open to current students.

	3-Bedroom Apartment	4-Bedroom Apartment	5-Bedroom Apartment
Session 1 May 12 - June 21	\$1736	\$1640	\$1544
Session 2 June 22 - Aug 5	\$1062	\$1948	\$1834
Total	\$3798	\$3588	\$3378

DOWNTOWN COMMONS

Open to current students.

(DTC 1) 2-Bedroom Single	(DTC 1) 3-Bedroom Single	(DTC 2) 2-Bedroom Single
\$1187	\$1064	\$1187
\$1416	\$1272	\$1416
\$2603	\$2336	\$2603

KAHLERT VILLAGE

Open to newly admitted and current students.

	Single	Double	Triple	Super Double	Single Cluster	Double Cluster	Super Single
Session 1 May 12 - June 21	\$1540	\$1340	\$1112	\$1434	\$1440	\$1252	\$1648
Session 2 June 22 - Aug 5	\$1828	\$1591	\$1320	\$1702	\$1709	\$1487	\$1957
Total	\$3368	\$2931	\$2432	\$3136	\$3149	\$2739	\$3605

DINING ON CAMPUS

There are a variety of locations to dine on campus this summer, including the Miller Cafe, the Union Food Court, Urban Bytes in Kahlert Village, and the Peterson Heritage Center Crimson Corner. To get the most out of your on-campus dining experience, purchase a meal plan from the options below.

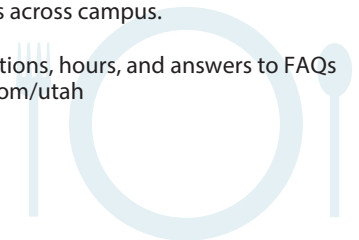
Meal plans can be purchased for the full summer semester (May 12 - Aug. 5).

Meal Plan Cost ((\$25 flex/session)	Plan 21	Plan 15	Plan 10
Session 1 May 12 - June 21	\$852	\$826	\$678
Session 2 June 23 - Aug 6	\$1032	\$1002	\$824
Total	\$1884	\$1828	\$1502

A meal plan is **required** for students living in a Lassonde cluster, Kahlert Village suites, and Kahlert Village clusters.

Meal plans optional for students living in other living spaces and room types across campus.

You can also view locations, hours, and answers to FAQs here: dineoncampus.com/utah



RESIDENCE HALL ASSOCIATION DUES - \$17 PER SUMMER

Dues support the Residence Hall Association (RHA) - a student-led organization that provides programming for residents. Dues are non-refundable.

BREAK HOUSING

Students with consecutive housing contracts (spring and summer or summer and fall) are eligible for Break Housing. Traditional Break Housing is available for students who will be on campus during the break housing period and Break Storage is available for students who will not be on campus during break dates. Break Storage is also available through Dorm Room Movers at an additional cost.

May Break Housing: May 6-11, 2023
- Traditional Break Housing: \$240

August Break Housing: August 5-15, 2023
- Traditional Break Housing: \$400

Learn more at <https://housing.utah.edu/apply-reserve/housing-during-break/>

PAYMENT INFORMATION

You may view your account information online in CIS. This is the one location where you will be able to view and pay for your tuition, housing bill, and meal plan bill. It is your responsibility to keep the account up to date. Students will pay for their housing cost at the same time they pay for their meal plan and tuition. These charges will be collected via Income Accounting. For more information about paying and for payment plan options, please visit: housing.utah.edu/apply-reserve/rates-n-housing-account/

EARLY ARRIVAL Available May 11

If you need to be on campus early for a university-affiliated reason, you can move in on May 11. You will be charged a daily rate of \$40. There is no meal plan service during this time.

SUMMER BUILDINGS

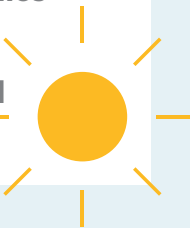
Apartments

Downtown Commons 1 & 2
U of U On The Draw
Shoreline Ridge

Lassonde Studios

Lofts Clusters
Pods

Residence Hall
Kahlert Village



AMENITIES

Your rate includes:

Bedroom furnishings: (mattress, xl twin bed, desk, desk chair, dresser)*
*Note: Lassonde pods do not include desk/desk chairs in room, but they do include community study workspace. The pods also include a full-size bed.

Apartments also include: Kitchen table with chairs, sofa, living room chairs, and microwave

Services: Internet and free laundry in each building's laundry room(s)

Utilities: Natural gas, electricity, water, recycling, and trash.

CONTRACT CANCELLATION INFORMATION 2023 SUMMER TERM ONLY

Up to 72 hours from the time of making your reservation (prior to 72 hours after making your reservation), you will be able to cancel your housing by going into your HousingU account and clicking on the Contract Cancellation tab on top.

After 72 hours, all students canceling their contract will forfeit the \$200 Reservation Fee.

After a student moves in individuals canceling their contract will be charged a Termination Fee, along with daily prorated charges up to the day of Contract Termination (Student must complete a Contract Termination Form and completely move out).

See the full Termination Fee schedule as posted on our website: housing.utah.edu or in your contract.

IMPORTANT DATES FOR 2023

APRIL 1 May Break Housing application available

APRIL 19 May Break Housing application and payment due

MAY 6-11 May Break Housing

MAY 12 Summer Move-In Day

JULY 1 August Break Housing application available

JULY 19 August Break Housing application and payment due

AUGUST 5 Residence Halls and Apartments close. Residents must move out by 2 p.m.

AUGUST 5-15 August Break Housing

AUGUST 11-14 Early Arrival for Fall for students with approved University-sponsored activities or requirements

AUGUST 15-18 Fall Move-In Week

Please note: The Utah State Board of Regents reserves the right, if necessary, to change any fees and/or charges without notice. Any error in computing charges is subject to correction. You will receive 30 days' notice of any planned increases to room or utility rates.

Non-Discrimination Policy: The University of Utah is fully committed to affirmative action and to its policies of nondiscrimination and equal opportunity in all programs, activities, and employment with regard to race, color, national origin, sex, gender identity/expression, age, status as a person with a disability, religion, sexual orientation, and status as a veteran or disabled veteran. The University seeks to provide equal access to its programs, services, and activities for people with disabilities. Reasonable prior notice is needed to arrange accommodations. Evidence of practices not consistent with these policies should be reported to the Office of Equal Opportunity and Affirmative Action, 801-581-8365 (V/TDD). Upon request, this information is available in an alternative format, such as cassette Braille, or large print.