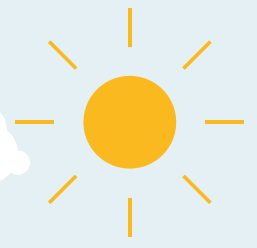


SUMMER 2024 RATES & DATES

LOVE LIFE. LOVE COLLEGE. LOVE LIVING ON CAMPUS.



Summer housing is open to all students enrolled in a minimum of 1 credit hour in either summer semester session. Prices below are listed per person. If the summer semester is your first time living on-campus, a \$130 application fee may apply.

SHORELINE RIDGE

Open to newly admitted and current students

	2-Bedroom Apartment	3-Bedroom Apartment	4-Bedroom Apartment
Session 1 May 10-June 21	\$1619	\$1514	\$1414
Session 2 June 21-August 3	\$1748	\$1635	\$1527
Both Sessions	\$3367	\$3149	\$2941

LASSONDE STUDIOS

Open to newly admitted and current students.

	3-Person Loft	4-Person Loft	Interior Pod	Exterior Pod	Single	Double
	\$1934	\$1823	\$1823	\$1934	\$1686	\$1466
	\$2072	\$1953	\$1953	\$2072	\$1807	\$1571
	\$4006	\$3776	\$3776	\$4006	\$3493	\$3037

KAHLERT VILLAGE

Open to newly admitted and current students.

	Single	Double	Triple	Super Double	Single Cluster	Double Cluster	Single Private Bathroom
Session 1 May 10-June 21	\$1792	\$1560	\$1294	\$1668	\$1675	\$1457	\$1918
Session 2 June 21-August 3	\$1837	\$1597	\$1326	\$1709	\$1716	\$1493	\$1964
Both Sessions	\$3629	\$3157	\$2620	\$3377	\$3391	\$2950	\$3882

DOWNTOWN COMMONS 2

Open to current students.

	(DTC 2) 2-Bedroom Single
	\$1343
	\$1450
	\$2793

DINING ON CAMPUS

There are a variety of locations to dine on campus this summer, including the Miller Cafe, the Union Food Court, Urban Bytes in Kahlert Village, and the Peterson Heritage Center Crimson Corner. To get the most out of your on-campus dining experience, purchase a meal plan from the options below.

Meal plans can be purchased for the full summer semester (May 10 - Aug. 2).

Meal Plan Cost (<small>\$25 flex/session</small>)	Plan 21	Plan 15	Plan 10
Session 1 May 10-June 21	\$966	\$937	\$770
Session 2 June 21 - Aug 3	\$1058	\$1026	\$843
Both Sessions	\$2024	\$1963	\$1613

A meal plan is **required** for students living in Lassonde clusters, Kahlert Village suites, and Kahlert Village clusters.

Meal plans optional for students living in other living spaces and room types across campus.

You can also view locations, hours, and answers to FAQs here: dineoncampus.com/utah

Students on certain meal plans can also use a meal tap at designated, transfer-eligible locations on campus. Transfer meal values are \$6.35 for breakfast and \$8.55 for lunch and dinner. If the meal purchase costs more than the transfer amount designated for that location, students may choose to use Flex Dollars, Dining Dollars, or USD to pay the difference.

BREAK HOUSING

Students with consecutive housing contracts (spring and summer or summer and fall) are eligible for Break Housing. Traditional Break Housing is available for students who will be on campus during the break housing period and Break Storage is available for students who will not be on campus during break dates. Break Storage is also available through Dorm Room Movers at an additional cost.

May Break Housing: May 5-9
- Traditional Break Housing: \$240

August Break Housing: August 2-12
- Traditional Break Housing: \$400

Learn more at housing.utah.edu/apply-reserve/housing-during-break/

PAYMENT INFORMATION

You may view your account information online in CIS. This is the one location where you will be able to view and pay for your tuition, housing bill, and meal plan bill. It is your responsibility to keep the account up to date. Students will pay for their housing cost at the same time they pay for their meal plan and tuition. These charges will be collected via Income Accounting. For more information about paying and for payment plan options, please visit: housing.utah.edu/apply-reserve/rates-n-housing-account/

EARLY ARRIVAL

Only available for campus programs and orientations

If you need to be on campus early for a university-affiliated reason, you can move in on May 9. You will be charged a daily rate of \$40. There is no meal plan service during this time.

SUMMER BUILDINGS

Apartments

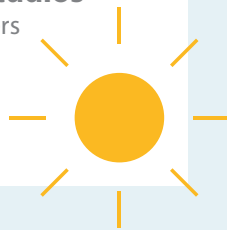
Downtown Commons 2
Shoreline Ridge

Residence Halls

Kahlert Village

Lassonde Studios

Lofts Clusters
Pods



AMENITIES

Your rate includes:

Bedroom furnishings: (mattress, xl twin bed, desk, desk chair, dresser)*
*Note: Lassonde pods do not include desk/desk chairs in room, but they do include community study workspace. The pods also include a full-size bed.

Apartments also include: Kitchen table with chairs, sofa, living room chairs, and microwave

Services: Internet and free laundry in each building's laundry room(s)

Utilities: Natural gas, electricity, water, recycling, and trash.

CONTRACT CANCELLATION

INFORMATION

2024 SUMMER TERM ONLY

Up to 72 hours from the time of making your reservation (prior to 72 hours after making your reservation), you will be able to cancel your housing by going into your HousingU account and clicking on the Contract Cancellation tab on top.

After 72 hours, all students canceling their contract will forfeit the \$200 Reservation Fee.

After a student moves in individuals canceling their contract will be charged a Termination Fee, along with daily prorated charges up to the day of Contract Termination (Student must complete a Contract Termination Form and completely move out).

See the full Termination Fee schedule as posted on our website: housing.utah.edu or in your contract.

IMPORTANT DATES FOR 2024

APRIL 1 May Break Housing application available

APRIL 19 May Break Housing application and payment due

MAY 5-9 May Break Housing

MAY 10 Summer Move-In Day—Session 1

JUNE 17 Summer Move-In Day—Session 2

JUNE 21 Summer Move-Out Day—Session 1

JULY 1 August Break Housing application available

JULY 19 August Break Housing application and payment due

AUGUST 3 Residence Halls and Apartments close. Residents must move out by 2 p.m.

AUGUST 3-13 August Break Housing

AUGUST 9-12 Early Arrival for Fall for students with approved University-sponsored activities or requirements

AUGUST 13-16 Fall Move-In Week

Please note: The Utah State Board of Regents reserves the right, if necessary, to change any fees and/or charges without notice. Any error in computing charges is subject to correction. You will receive 30 days' notice of any planned increases to room or utility rates.

Non-Discrimination Policy: The University of Utah is fully committed to affirmative action and to its policies of nondiscrimination and equal opportunity in all programs, activities, and employment with regard to race, color, national origin, sex, gender identity/expression, age, status as a person with a disability, religion, sexual orientation, and status as a veteran or disabled veteran. The University seeks to provide equal access to its programs, services, and activities for people with disabilities. Reasonable prior notice is needed to arrange accommodations. Evidence of practices not consistent with these policies should be reported to the Office of Equal Opportunity and Affirmative Action, 801-581-8365 (V/TDD). Upon request, this information is available in an alternative format, such as cassette Braille, or large print.